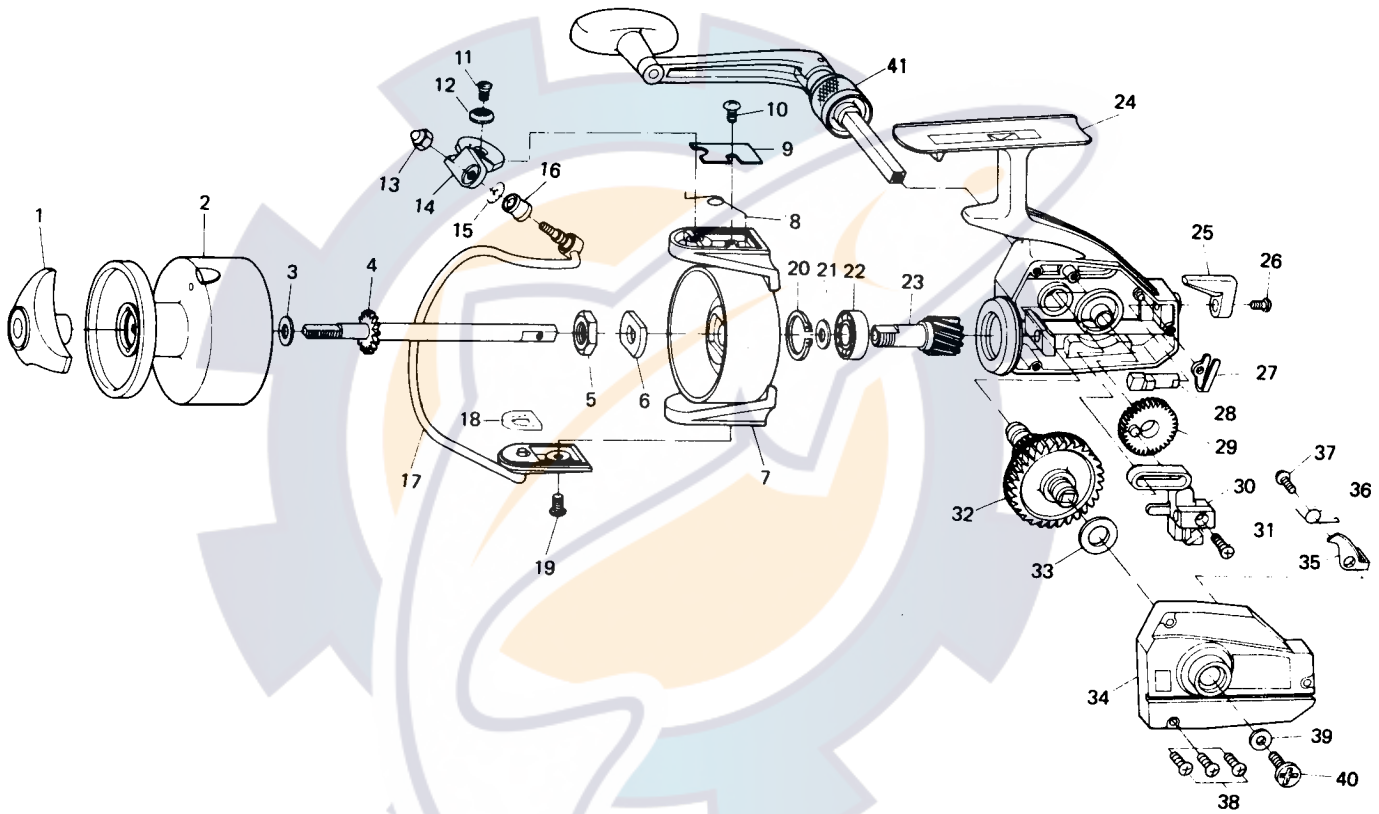
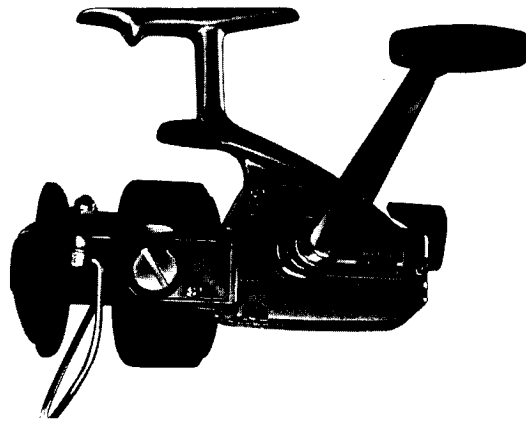




DAIWA

SPINNING REEL

2500c



| Key No. | Parts No. | Parts Name | Price | Key No. | Parts No. | Parts Name | Price | Key No. | Parts No. | Parts Name | Price |
|---------|-----------|-------------------------|--------|---------|-----------|-----------------------------|-------|---------|-----------|--------------------------|-------|
| 1 | 67402102 | Drag knob | \$2.15 | 15 | 63734501 | Bail washer | \$.50 | 28 | 64604721 | Anti-reverse cam | \$.60 |
| 2 | 67310201 | Spool assembly | 11.50 | 16 | 62502801 | Line roller | 1.00 | 29 | 64123401 | Oscillating gear | 1.00 |
| 3 | 63749001 | Spool washer | .50 | 17 | 67251111 | Bail | 2.40 | 30 | 64807711 | Oscillating slider | .60 |
| 4 | 67102013 | Main shaft | 1.50 | 18 | 62103111 | Balancer | .60 | 31 | 63518901 | Oscillating slider screw | .50 |
| 5 | 63404601 | Rotor nut | .60 | 19 | 63516601 | Bail holder screw | .50 | 32 | 64123311 | Drive gear | 2.40 |
| 6 | 63724901 | Rotor retaining washer | .50 | 20 | 63202111 | Ball bearing retaining ring | .50 | 33 | 63712800 | Drive gear washer | .50 |
| 7 | 62012101 | Rotor | 4.20 | 21 | 63744211 | Pinion washer | .50 | 34 | 67055517 | Body cover | 1.20 |
| 8 | 61435311 | Bail spring | .50 | 22 | 66338001 | Ball bearing | 4.00 | 35 | 61109621 | Anti-reverse claw | .60 |
| 9 | 66326411 | Bail spring cover | .50 | 23 | 64016611 | Pinion | 2.10 | 36 | 61423951 | Anti-reverse claw spring | .50 |
| 10 | 63511801 | Bail spring cover screw | .50 | 24 | 67001511 | Body | 5.00 | 37 | 63516102 | Anti-reverse claw screw | .60 |
| 11 | 63631901 | Arm lever screw | .60 | 25 | 65404922 | Anti-reverse lever | .50 | 38 | 63515901 | Body cover screw | .50 |
| 12 | 61303201 | Bail holder cap | .50 | 26 | 63511801 | Anti-reverse lever screw | .50 | 39 | 63719521 | Handle washer | .50 |
| 13 | 63408501 | Bail nut | .60 | 27 | 61506731 | Anti-reverse lever spring | .60 | 40 | 63513631 | Handle screw | .50 |
| 14 | 62308111 | Arm lever | .50 | | | | | 41 | 67452101 | Handle | 4.80 |

ALWAYS SPECIFY MODEL NO., PART NAME & PARTS NO. WHEN ORDERING PARTS
PLEASE ENCLOSE CORRECT AMOUNT FOR PART'S PRICE WHEN ORDERING